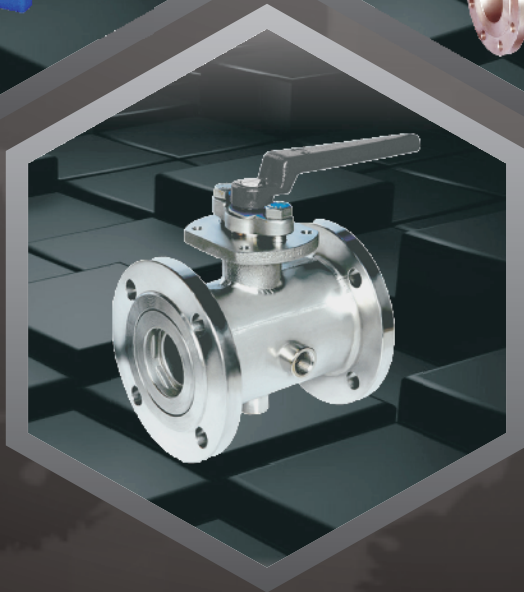
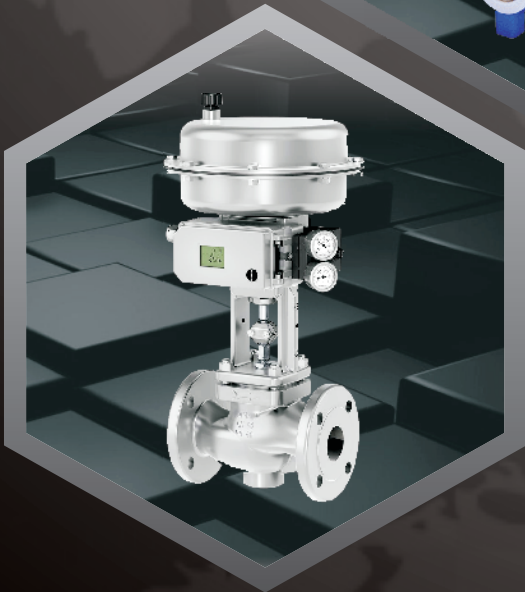
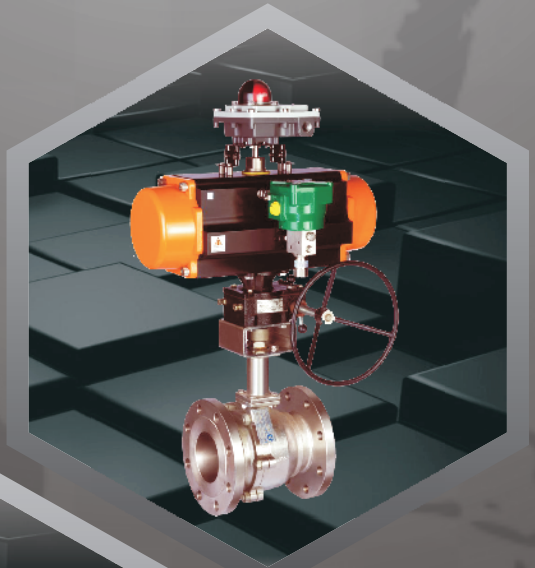
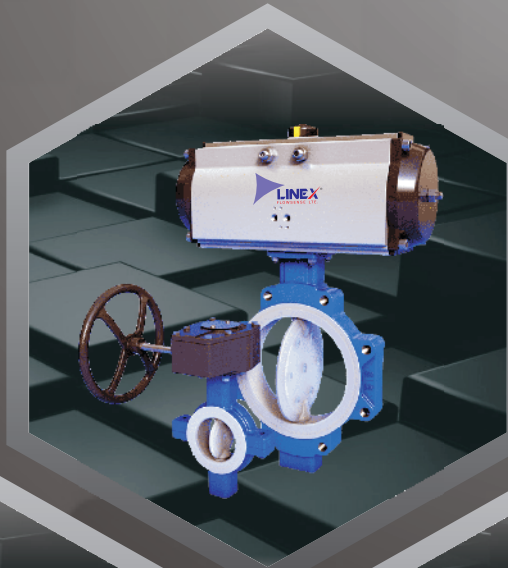




Delivering Excellence



Automation

PRODUCT PORTFOLIO

We would like to introduce ourselves as one of the leading manufacturer & supplier of all types automation valves Instrumentation products. Owing to our rich industry experience, we are supplying a broad spectrum of Industrial Products. Since 25 years "LINEX FLOSENSE LTE." has taken the path of quality and journey is still on.

We continuously upgraded and modernize ourselves adding the best technology available in-house, state of design & production facility. We use best international components as required and controls to create products of high quality at affordable cost. To offer our clients with the products as per their specifications, we also provide customized solutions. Our entire range is appreciated for its unique features such as excellent performance, longer service life and reasonable prices. We are backed by sound manufacturing unit spread over a sprawling area, which is equipped with the requisite machines.

OUR TEAM

Leveraging on our skilled and qualified professionals, multifaceted infrastructure facility we have been able to consolidate our market position which includes all major Industrial Joints of India.

We have extremely dedicated professionals in our organization who work round the clock to achieve organizational objective. Their in-depth knowledge about industry up gradation has enabled us to provide quality range of products.

MANUFACTURING FACILITIES

The entire production process is closely monitored by our diligent team of engineers and technicians. Each and every raw material is stringently tested on various parameters by our team of quality controllers. We make sure that only flawless range of our products reaches the market so that our customers get good value for their hard-earned money. Our sales & marketing agents carry out market surveys to understand the growing demands of our



PMI (Positive Material Identification)

We Have Standard Testing Facility -

Hydro Test Bench - 1 Nos.- Range - 15 Mm To 250 Mm

Hydro Test Bench - 1 Nos.- Range - 50 Mm To 600 Mm

Pumatic Test Machine - 2 Nos. - 15 Mm To - 150 Mm

Hydro Test Pressure Range - Up To 450 Kg/cm²

Pumatic Test Pressure Range - 0 To 12 Kg/cm²

The Most Common And Internationally Applied Shut-off Valve Testing Standards Are;

- Api 598 / Bs Std.
- En 12266 Part-1 And 2
- Isi Indian Std. On Request .



PRO.CODE-LX 790



PNUMATIC ACTUATED BALL VALVE

Construction	1 piece 2 piece 3 piece Extended stem available
"Compliance to"	ASME B16.34. • API 598 and API 607 4th Edition (Fire Safe).
Ball design	Floating design and Trunion mounted on request
Size	15 nb to 250 nb
Port/Bore	Full bore and Reduce bore
Rating	150 Class to 800 class
End connection	Screwedend / socket weld / Flangend
MOC	WCB / 304 / 316 / 316 l / FEP & PFA lined also
Specillity	Fire safe / Trunion mounted and Jaketed
Power operator	Quarter tern pneumatic actuated / sinlge and double acting
Type	Rack & Pinion / Scotch & Yoke / Vane
Duty	On / off
Accssories	Solenoid Valves, Limit / Proximity Switch Box, Air Filter R Manual Over-ride, Electro-Pneumatic Positioner, I-P Converter

PRO.CODE-LX 791



FLUSH BOTTOM BALL VALVE

Construction	1 piece 2 piece Atuated and manual also
Compliance to	BS -5351/API.602
Ball design	Floating design and Trunion mounted on request
Handle	45°C Operation
Size	40 NB TO 150 NB
Port/Bore	Full bore
Rating	ASME B 16.5 - CLASS ASA 150 # & 300 #
End connection	FLANGEND
MOC	304 / 316 / 316 l FEP & PFA lined also
Specillity	Fire safe / Jaketed (on request)
Power operator	Quarter tern pneumatic actuated / sinlge and double acting
Type	Rack & Pinion / Scotch & Yoke / Vane
Duty	On / off
Accssories	Solenoid Valves, Limit / Proximity Switch Box, Air Filter R Manual Over-ride, Electro-Pneumatic Positioner, I-P Converter

PRO.CODE-LX 792**BUTTERFLY VALVE**

Construction	1 piece 2 piece	Actuated & Manual also
"Compliance to"	BS: 5155, IS:13095 and also API 609./AWWA C-504, ISO 10631	
Body MOC	Ductile Iron /WCB / SS 304 / SS 316/SS 316 L	
Seat MOC	NBR/ EPDM / Silicon/ PTFE /FEP / PFA (Moulded and replacable)	
Disc MOC	SG IRON / WCB/SS 304/SS 316 / FEP & PFA LINED	
Rating	PN -6 / PN -10 / PN -16	
End connection	WAFER TYPE / LUG TYPE / FLANGEND / TC END	
Operation	Manual Hand lever / Worm Gear Box / Actuated mounted	
Size	40 NB TO 1000 NB	
Power operator	Quarter tern pnumatic actuated / sinlge and double acting	
Type	Rack & Pinion / Scotch & Yoke / Vane	
Duty	On / off	
Accssories	Solenoid Valves, Limit / Proximity Switch Box, Air Filter R Manual Over-ride, Electro-Pneumatic Positioner, I-P Converter	

PRO.CODE-LX 793**CHECK VALVE (NRV)**

Construction	Single Plate and Spring Loaded Disc Check Valve	
"Compliance to"	API 6D / API 598	
Body MOC	WCB / SS 304 / SS 316 /SS 316 L / FEP & PFA LINED	
Seat MOC	EPDM / PTFE / FEP & PFA LINED	
Disc MOC	WCB / SS 304 / SS 316 /SS 316 L / FEP & PFA LINED	
Rating	PN 10 /16 FOR WCV & PN 40 FOR DISC CHECK VALVE	
End connection	Wafer Type Moun Between ANSI B 16.5/BS 10 Table/DIN	
Operation	Self Acting	
Size	15 NB to 200 NB for DCV 40 NB to 600 NB for WCV	
Lekage Class	Class VI	

PRO.CODE-LX 794**CONTROL VALVE (PNUMATIC DIPHGRAM TYPE)**

Construction	2/2 & 3/2 Pnumatic Diphgram precise regulating control valve	
"Compliance to"	BS STD. & API 623	
Body MOC	WCB / SS 304 /SS 316 / 316 L	
Seat MOC	AISI 410 / SS 304 / SS 316	
Disc MOC	SS 304 / SS 316	
Diaphragm	Neoprean / epdm	
Rating	ASA 150 # / ASA 300 # / ASA 600 #	
End connection	FLANGEND & BUTTWELD	
Operation	2/2 & 3/2 Pnumatic Diphgram precise regulating control valve	
Size	25 NB TO 250 NB	

PRO.CODE-LX 795



Y TYPE FLUSH BOTTOM VALVES

Construction	Manual Handed Wheel Operated Valve Open Inside
"Compliance to"	BS STD. & API 623
Body MOC	SS 304/SS 316/ 316 L
Seat MOC	SS 304/SS 316
Disc MOC	SS 304/SS 316/SS316L
Rating	ASA 150#/ASA 300 #
End connection	Flangend, ASME B.16.5
Size	25 NB to 300 NB

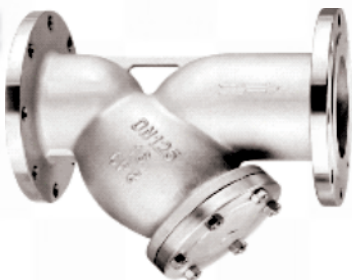
PRO.CODE-LX 796



JACKETED BALL VALVE

Construction	1 PIECE JACKETED BALL VALVE
Compliance to	BS -5351/API -602
Body MOC	WCB/SS 304/SS 316/ 316 L
Seat MOC	PTFE/GFT/CFT/PEEK
BALL & STEM -	SS 304/SS 316/SS 316 L
Rating	ASA 150#/ASA 300 #
End connection	Flangend ASME B.16.5
Operation	Hand Lever And Pnumaticc Actuated Also
Size	25 NB to 200 NB

PRO.CODE-LX 797



YTYPE STRAINER

Construction	YType Casted Or Fabricated
compliance To	Bs Standerd Jis B8390
Body MOC	CS/SS 304/SS 316/ 316 L
SCREEN -	SS 304/SS 316/
MESH -	40 # TO 200 #
Rating	ASA 150#/ASA 300 #/ ASA 600 #
End connection	Scrw3dend / Flangend & Butt weld
Size	25 NB to 250 NB

PRO.CODE-LX 798



POT TYPE STRAINER

Construction	Basket Type / Pot Type Casted And Fabricated
Complies to	Bs Standerd Jis B8390
Body MOC	CAST STEEL/SS 304/SS 316
SCREEN -	SS 304/SS 316/
MESH -	40 # TO 200 #
Rating	ASA 150#/ASA 300 #/ ASA 600 #
End connection	Scrw3dend / Flangend & Butt weld
Size	50 NB to 1000 NB

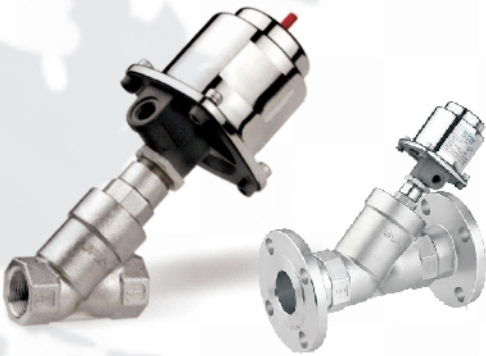
PRO.CODE-LX 799



MANUAL, PNEUMATIC, ACTUATED KNIFE EDGE VALVE

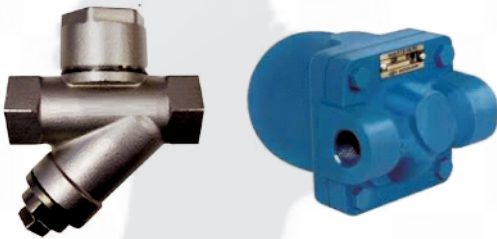
Construction	Manual, Pneumatic, Knife Edge Valve
"Compliance to"	ISO 5208/MSS SP81
Disc MOC	WCB /SS 304 /SS 316
Body MOC	WCB, CF8, CF8M, Hast Alloy,
Rating	ASA 150# / ASME B.16.5
End connection	Flangend / wafer type
Size	50 NB to 600 NB

PRO.CODE-LX 800



Y TYPE ANGLE VALVE

Construction	YType Angle Valve,
"Compliance to"	ASME B16.10
Disc MOC	SS304/SS316/SS316L
Body MOC	SS304/SS316/SS316L
SEAT	PTFE/GFT/CFT
Rating	PN.16
End connection	Flangend & Scrowend
Size	15 NB to 100 NB



STEAM TRAP TD 3/TYPE/STEAM TRAP BALL FLOAT TYPE FT-10-20

Moc	WCB/SS304/SS316
Trims	SS304/SS316
End Connection	Screwed end Flangend
Class	PN.10 end 16 Flangend
Size	15NB TO 50NB



STEAM LINE GATE /GLOBE/CHECK VALVE

Moc	WCB/SS304/SS316
Trims	SS304/SS316
End Connection	S/E/SW/FLANGEND
Class	150# TO800#
Size	15NB TO 600NB



STEAM LINE GLANDLESS PISTON VALVE

Moc	WCB/SS304/SS316
Trims	SS304/SS316
Seal	Graph Oil
End Connection	S/E/SW/FLANGEND
Class	150# TO 800#
Size	15NB TO 200NB

PFA / FEP LINED VALVES



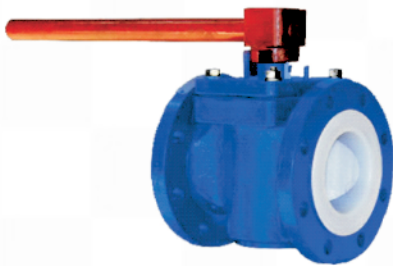
LINED BUTTERFLY VALVE

Body	WCB/SS304/SS316
Seat	FEP/PFA PTFE
Disc	316/PFA/FEP
Rating	PN 10 Wafer Type
Test Std	BS E N 12661-1-2003
Size	50NB To 300NB



LINED BALL VALVE

Body	WCB/SS304/SS316
Lining	FEP/PFA
Ball	FEP /PFA
Seat	PTFE
Rating	PN 10 FLANGEND ASA 150#
Test Std.	API 598
Size	25NB TO 150NB



LINED PLUG VALVE

Body	WCB/SS304/SS316
Lining	FEP/PFA
Plug	PTFE/PFA/FEP
Gland	PTFE
Rating	PN-16 FLANGED
Test Std.	BS EN 12266-1
Size	25NB TO 150NB



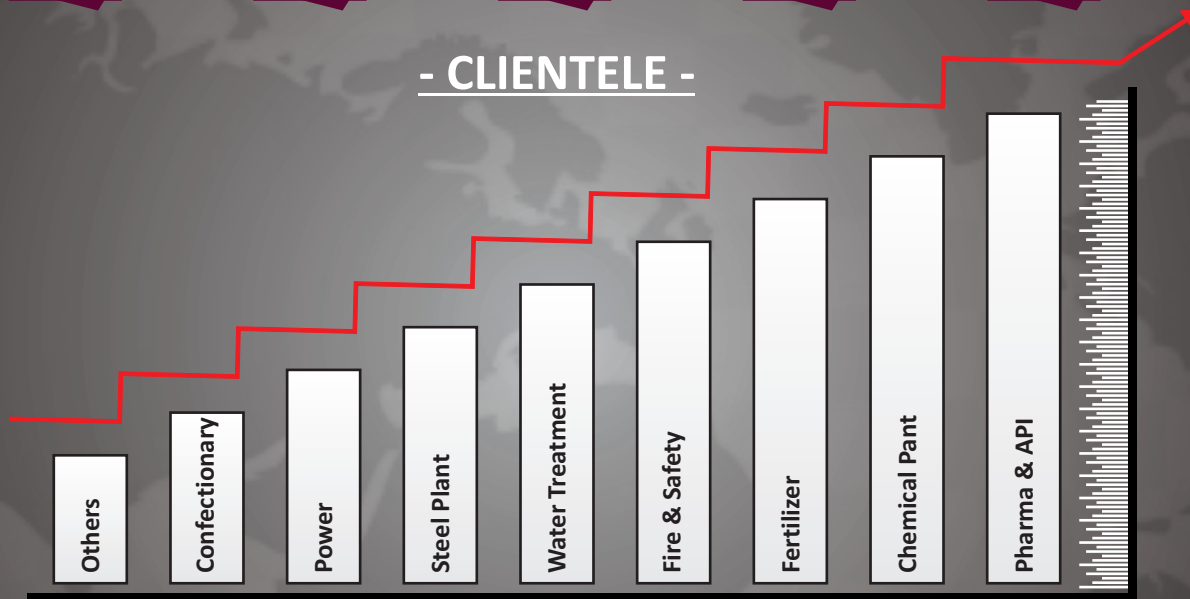
LINED DIAPHRAGM VALVE

Body	WCB/SS304/SS316
Lineing	FEP/PFA
Diaphragm	EPDM WITH PTFE LINED
Rating	PN10 FLANGEND ASA 150#
Test Std.	BS EN 12266-1
Size	25 NB TO150NB

- CERTIFICATION -



- CLIENTELE -



- Registered Office -

110, Sheeba Complex, Near Regal Cinema,
M. G. Road, INDORE - 452 001 (M.P.) INDIA
Ph. : 0731-4900039-4087711
Mob. : 90988 70581
info@linexflw.com, marketing@linexflw.com

- Mumbai Office -

B-23, New Vikas, Opp. Gyankendra School,
Near Kokilaben Ambani Hospital,
Four Banglows, Andheri (W), Mumbai-400058
Mob. : 88284 35241
mumbai@linexflw.com

- Work Shop -

30-D, Sector - C, Sanwer Road, Industrial Area, INDORE - 452 015 (M.P.) INDIA

- Mfg Unit -

Unit - 1 : Plot No.27, Ahemdabad-Indore Highway, Industrial Estate, Bakrol, Dist. Ahemdabad (Gujrat)
Unit - 2 : National Highway-27, S.R. No. 85, Near Atul Auto, Gondal Road, Shapar, Dist. Rajkot (Gujrat)
E-mail : gujrat@linexflw.com

- Dealer Network -

◆ Pune ◆ Rajasthan ◆ Hydrabad ◆ Ahemdabad ◆ Agra ◆ Chhattisgadh

- International Network -

◆ Gulf Countries ◆ Australia ◆ Singapore