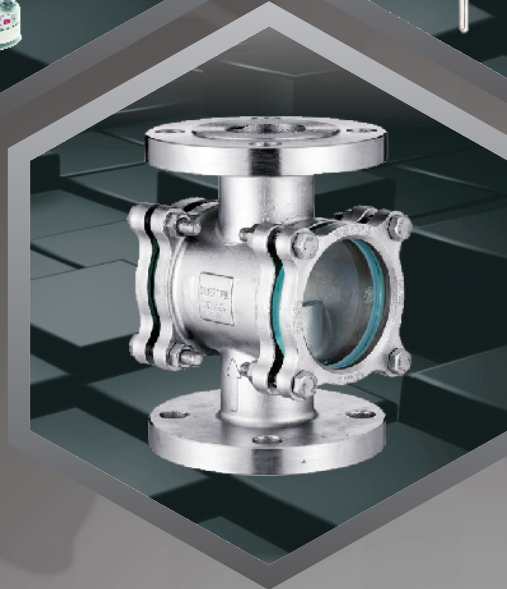
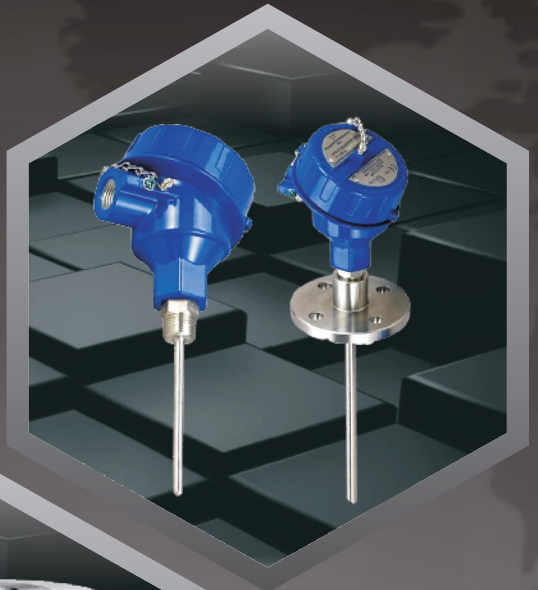
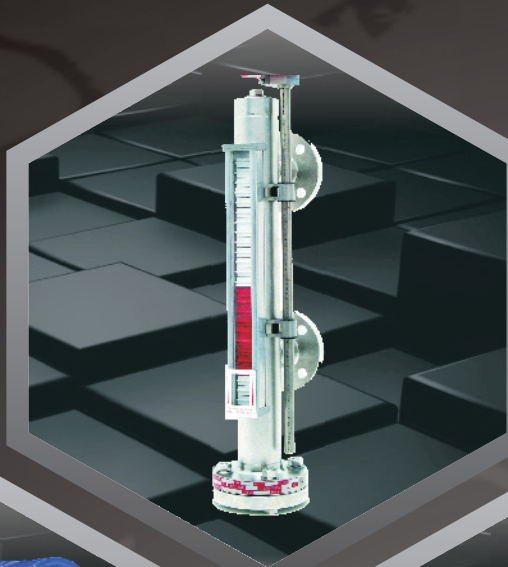


# Instrumentation



**LINEX**<sup>®</sup>  
FLOWSENSE LTE.

*Delivering Excellence*

**Linex Flowsense**, we offers you various range of industrial Instruments items for all your process handling needs. Linex Flowsense strength is quality products at affordable prices, prompt delivery and the unflinching commitment to excel. The products have been enjoying a sustained presence in the national for over last 20 years in chemical and process industries.

Linex Flowsense Products are widely used in chemical & Process industries, Refineries, Petrochemical & Fertilizer Plants, Pharmaceuticals, Oil Exploration, Thermal & Nuclear Plants, Food & Beverage industries, Effluent Treatment & Sewerage Plants, Water Treatment, Cooling water & Water supply plants, Mining Industries etc.

Linex Flowsense achieved reputation and trust within a very short span. Thanks to our user friendly direct marketing, far sighted & honest business policy.

We introduce overself as one of the Supplier / Manufacturer of various Instrumentation Product. We are Indore MP based ISO company dealing in Industrial Instruments Products since last 20 years.

We have dealings with some of the renowned Industries of Nation and have good Industrial liasoning in this area. Our Marketing efforts and timely supply of goods have resulted in entire customer satisfaction .

We have our Branch Office at Mumbai to cater our valued clients of Financial Capital.

For Linex Flowsense

**V. K. Sharma**

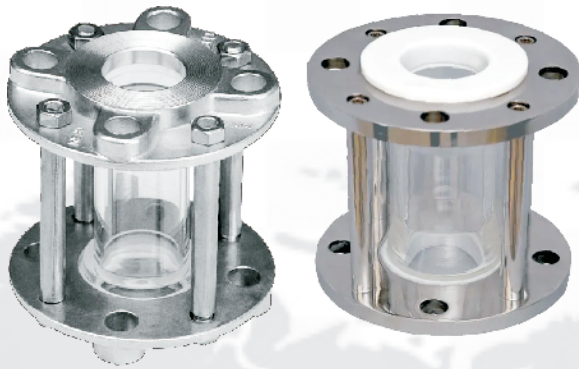


## INDEX

• SIGHT GLASS	03
• DOUBLE WINDOW SIGHT GLASS	03
• OBW-R SIGHT GLASS / GLASS WIPER	03
• TUBULAR LEVEL INDICATOR	03
• SIDE MOUNTED MAGNETIC LEVEL INDICATOR	04
• FLOAT AND BOARD LEVEL INDICATOR	04
• TOP MOUNTED LEVEL INDICATOR	04
• MAGNETIC LEVEL TRANSMITTER	04
• SIDE MOUNTED MAGNETIC LEVEL SWITCH	05
• LEVEL INDICATOR REFLUX TYPE	05
• PRESSURE GAUGE/ VACCUM GAUGE/ TEMPERATURE GAUGE	05
• ROTA METER/GLASS TUBE ROTA METER	06
• ELECTRO MAGNETIC FLOW METER	06
• METALTUBE (MAGNETIC ROTA METER)	06
• BYPASS ROTA METER	06
• FLUSH DIAPHRAGM PRESSURE SWITCH	07
• PRESSURE REGULATOR	07
• TEMPERATURE MEASUREMENT	07
• FLAME PROOF TEMPERATURE INDICATOR	08
• TEMPERATURE REGULATOR	08
• THERMOCOUPLE/RTD/THERMOWELL	08
• FLAMEPROOF REACTOR VESSEL LAMP (RV LAMP)	08
• FLAMEPROOF BULK HEAD	09
• FLAMEPROOF LED LIGHTS	09
• FLAME ARRESTER	09
• BREATHER VALVE	09
• INDUSTRIAL HOOTER WITH FLASHLIGHT	10
• FLAM EPROOF HOOTER	10
• FLAMEPROOF ON-OFF ROTARY SWITCH	10
• FLAMEPROOF SWITCH SOCKET WITH PLUG TOP	11
• FLP/WP HOOTER WITH ACCEPT BUTTON	11
• PRESSURE SWITCH	11



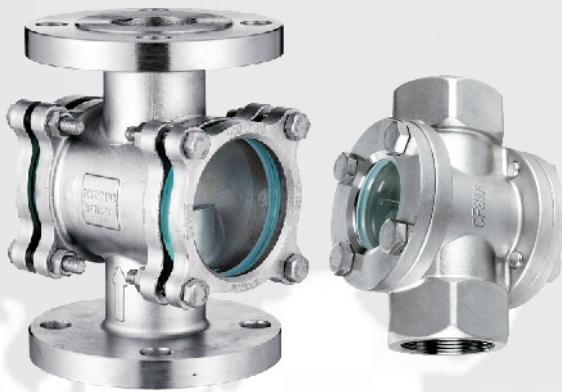
**PRO.CODE-LX 801**



• **SIGHT GLASS**

BODY- WCB /SS304/SS316/SS316L/PTFE LINED  
SEAT- PTFE/GFT  
GLASS- BOROSILICATE WITH ACRYLIC GLASS COVER  
STUD-SS304/SS316  
END CONNECTION-FLANGE END ASA 150 /TC END  
Size :-15NB TO200NB  
Allen bolt design / PTFE bush design

**PRO.CODE-LX 803**



• **DOUBLE WINDOW SIGHT GLASS**

BODY- WCB /SS304/SS316/SS316L/PTFE LINED  
SEAT- PTFE/GFT  
GLASS- TOUGHENED GLASS  
STUD-SS304/SS316  
END CONNECTION-FLANGE END ASA 150 /TC END  
Size :-15NB TO200NB

**PRO.CODE-LX 802**



• **OBW-R SIGHT GLASS / GLASS WIPER**

Installation on digester roof  
Flanged /Embedding connection  
Size :DN200/DN300/DN400/DN600  
Product Feature:  
Stainless steel construction  
Flanged connection /Embedding ring  
Built-in cleaner nozzle /wiper  
Ring shield (optional)

**PRO.CODE-LX 804**



• **TUBULAR LEVEL INDICATOR**

Type Side Mounted Tubular Glass  
Moc-Mild Steel /FRP/PP/SS304/SS316  
Wetted Parts -PTFE/PP/SS304/SS316  
Glande -PTFE/PP  
Plug-SS304/SS316  
Glass- 19MM&22 MM BOROSILICATE  
Scale -SS304/Acrylic  
End Connection-Flangedend Ansi B16.5  
Flange Size- 15MM TO 25MM

### PRO.CODE-LX 805



#### • SIDE MOUNTED MAGNETIC LEVEL INDICATOR

Magnetized float moves with level in external chamber and magnetic followers capsule or roller or flap indicates the liquid level externally.

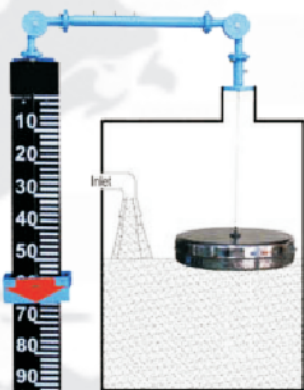
Wetted parts in S.S. 304, S.S. 316, polypropylene, PTFE lined.

Mainly use in furnace oil benzene, toluene, ethylene, alcohol, acid liquid, gases like NH<sub>3</sub>, LPG So<sub>2</sub>, PLC<sub>3</sub>, etc.

Height and low level switch, level transmitter 4-20 mA, on request.

High up to 6 mtr

### PRO.CODE-LX 806



#### • FLOAT AND BOARD LEVEL INDICATOR

Mainly use for storage tank of oil, F.O. Firm/Dm water tank lube oil, HCL acid, alkalis, etc.

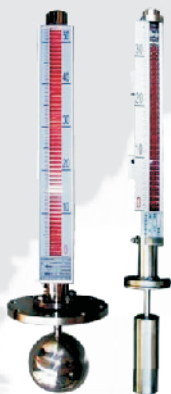
Vapour seal for special application like HCL, N<sub>2</sub> purged tank, dilute alkalis etc.

Suitable for tall & large tank non pressurized and non hazardous chemical storage tank.

Height 1 meter to 30 meter and other on request.

Available in polypropylene & Teflon coated float. Scale marking in 5 mm, 10mm.

### PRO.CODE-LX 807



#### • TOP MOUNTED LEVEL INDICATOR

Mainly use for underground tank and horizontal tank suitable for corrosive acids like sulphuric, nitrite, acetic acids & solvent, toluene, benzene, acetone etc.

A float moves inside the coupled with this float moves externally in a SS pipe Bi colour PVC capsule OR Roller follower magnet indicates level externally.

Available in simple non magnetic where pvc float moves in glass tube externally.

### PRO.CODE-LX 808



#### • MAGNETIC LEVEL TRANSMITTER

A simple construction of float and guide pipe made up non magnetic materials.

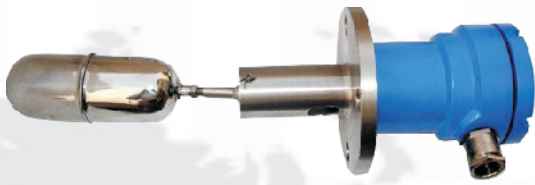
Magnetic float moves with level over guide pipe, so that the resistance of the PCB inside the pipe change which is converts into 4-20 mA/0 to 5 v output & RS 485 on request.

Wetted parts : S.S. 316/ PP.

Max. temp ; 100 degree c\* mounting min ; 50 NB flange end or screwed.

Input of 24 VDC and output 4-20 mA, with digital display in mm.

### PRO.CODE-LX 809



- **SIDE MOUNTED MAGNETIC LEVEL SWITCH**

Suitable for fitting into tank or process vessels for controlling liquid level for preventing tank overflow.

Hooter and alarm operate.

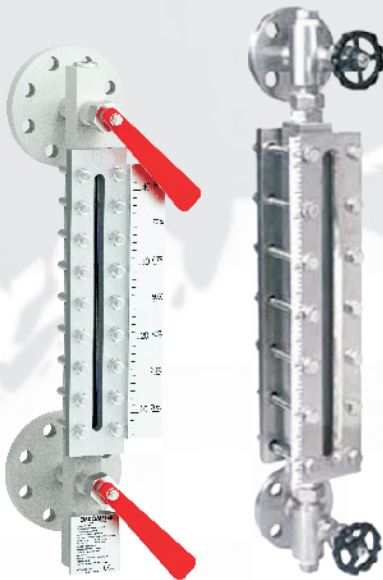
To control dry pump running.

Minimum 25 NB flange to any size (Square flange on request)

Housing: aluminum die cast weather proof, flame proof.

High temperature on request.

### PRO.CODE-LX 810



- **LEVEL INDICATOR REFLUX TYPE**

Reflex level gauge: wetted parts in M.S., SS304, S.S. 316, polypropylene, for high temperature and high pressure liquid storage tank in fertilizer, petrochemicals, pharmaceutical, chemical industries etc.

Reflex level gauge glasses precision grooves cut inner side and mainly use for colorless liquid and high temp and high pressure.

Transparent level gauge: glasses are without grooves and arrange at the front and rear of a slotted liquid chamber and mainly use for transparent & coloured liquids and high temp & high pressure.

Isolation valve on request.

max length 3000 mm in single piece

### PRO.CODE-LX 811



- **PRESSURE GAUGE/ VACCUM GAUGE/ TEMPERATURE GAUGE**

Body -MS/SS304/SS316

Wetted Parts in SS304/SS316/SS316L/Hesttelloy

Dial Size 50MM to 300MM

End Connection- BSP/NPT 3/8" to 1/2"/ Flangend/ TC end

Diaphragm sealed & chemical sealed

Range - Pressure Gauge - 0 to 300 Kg

Range - Vaccum Gauge - 0 to 760 MMHG

Range - Temperature Gauge - 0 to 500° C

### PRO.CODE-LX 812



- **ROTA METER/GLASS TUBE ROTA METER**

Used for rated flow measurement of Water, Liquid, Gas, Air,

H2 & O2 etc

Wetted parts in M.S., S.S. 304, S.S. 316 polypropylene.

Process connection from 1/8" to 4" NB pipe size.

End Connection-Flange end ASA 150 /TC END/Screwed end

Flow control valve on your request

FLOW RANGE -20LPH TO20000LPH (ACCURACY+2%FSD)

### PRO.CODE-LX 813



- **ELECTRO MAGNETIC FLOW METER**

MOC -WBC/SS304/SS316

LINE-NEOPRENE/PTFE

ELECTRODE-SS316L/ASTROLITE

SIZE-25NB to 200NB

Flow Direction as per Your Requirement

only conductive liquid

### PRO.CODE-LX 814



- **METALTUBE (MAGNETIC ROTA METER)**

Used for rated flow measurement of water, liquid (opaque),

Gas, Air & Steam under critical operating condition.

Wetted parts in S.S. 304, S.S. 316, polypropylene.

Process connection from 1/2" NB to 4" NB pipe size.

Accuracy of +2% F.S.D.

Flow alarm as per your request (proximity switch)

Digital and 4-20 mA output as per your request

### PRO.CODE-LX 816



- **BYPASS ROTA METER**

Available on large pipe line size of 2" NB to 14" NB

Wetted parts in MS, S.S. 304, S.S. 316, polypropylene PVC etc.

Orifice plate in S.S. 316 P.P. Flow direction as per your request.

Flow ranges 10000 LPH to on your request.

Flow alarm as per your request

Accuracy of +2% F.S.D.

**PRO.CODE-LX 817**



**FLUSH DIAPHRAGM PRESSURE SWITCH**

Usage/Application	For any Viscous Material
Media Type	Liquid
Range Setting	Adjustable Range
Contact System Type	SPDT
Electrical Connection	Screw Terminals
IP Rating	IP67

Pressure Switch available with Flush diaphragm Seal with Calibration,  
The Range available is Vacuum,  
Compound Range -1 to 4 bar  
Positive pressure up to 100 bar

**PRO.CODE-LX 818**



**PRESSURE REGULATOR**

Body	SS304/SS316/SS316L/Hestelloy C
Wetted Parts	SS304/SS316/SS316L/Hestelloy C
End Connection	BSP /NPT Screwedend /Flangend
SIZE	3/8" , 1/2"
Pressure Rating	Up to 220 KG/CM <sup>2</sup>
Application	Hydrogen, Methane, Carbon Dioxide, Oxygen, Nitrogen, Air, Acetylene, Helium, Argon, Nitrous Oxide

**PRO.CODE-LX 819**



**USAGE/APPLICATION**

**TEMPERATURE MEASUREMENT**

Material	SS304 / SS316/SS316L/PTFE/ALLOY
Voltage	Resistive
Sensor Mounting	Direct
Temp. Range	-100 to 300 Deg C

Technical Specification:-

Product and Description: Flame proof Temperature Sensor

Elements: PT 100 Duplex

Temperature Transmitter: Duplex 4-0ma,

Enclosure : Exd IIC Certified as per IS/IEC60079-0:2004 & IS/IEC60079-1:2007

Temperature Classification : T6

Protection: IP67 as per IEC 60529: 2001

Enclosure: Die cast Aluminum

Stem Size: Dia 6 or 8 Or 10MM MM x 50 MM to 3000MM

Process Connection: 1/2" NPT (M) with Fix or Adjustable

Cable entry: 3/4" ET or 1/2 NPT Or M20 x 1.5P

**PRO.CODE-LX 820**



**FLAME PROOF TEMPERATURE INDICATOR**

Body	Die cast Aluminium
Input Options	TC / 4 to 20 MA DC / Pt - 100
Supply	230 VAC +/- 10%, 50 Hz
Relay Output	ON / OFF, Time Proportional, PID
Set Point	Single or Double, Three set point
Set Point Adjust	Separate for Each Channel
Indication	3 ½ Digit, 1.5 mm, Bright Red LED
Accuracy	+/- 0.25% FSD Or +/- 1 Digit

**PRO.CODE-LX 821**



**TEMPERATURE INDICATOR**

Body	ABS Plastic /Metal powder coated with polycarbonate front, Aluminum Die cast housing for flame proof enclosures, Metal enclosures for large display.
Input	Thermocouple type J, K, RTD (Pt-100) / 2 or 3 wire Temperature Range Subject to the input.
Accuracy	± 0.5 % of the specified range
Display	3.5 digits or 4.5 digits 0.5" Red 7-segment LED display
Linear Supply	230VAC or 110VAC +/- 10%, 50/60Hz
Size	72 x 72, 96 x 48 and 96 x 96 , 192 x 96

**PRO.CODE-LX 822**



**THERMOCOUPLE/RTD/THERMOWELL**

Body	SS304/SS316/SS316L/PTFE
Input Option	0°C is 100Ω and at 100°C, It is 138.5Ω. (450 Deg.Cent)
Supply	4-20mA or 0-10V DC
Temperature Range	-270 to 1260C
Size	From 6MM to 20MM

**PRO.CODE-LX 823**



**FLAME PROOF REACTOR VESSEL LAMP (RV LAMP)**

Body	Die cast Aluminium
Supply	85 VACTO 300 VAC
<b>Suitable to the following lamps:</b>	
<ul style="list-style-type: none"> <li>• Fixture is with switch or timer circuit</li> <li>• 100 W GLS lamp</li> <li>• 23W CFL</li> </ul>	



**PRO.CODE-LX 824****FLAMEPROOF BULK HEAD**

Body	Die cast Aluminium
Supply	230V AC & 24V dc
Lighting Type	LED
Wattage	UP TO 60W
Lighting Color	Cool White
Usage/Application	Industrial
Install Style	Suspended
IP Rating	IP66

**PRO.CODE-LX 825****FLAMEPROOF LED LIGHTS**

Body	Die cast Aluminium
Supply	90~305VAC (50Hz / 60Hz)
Wattage	UP TO 60W
Lighting Color	High Lumens OSRAM LED
LED CCT	6500K, CRI>80
Usage/Application	Industrial
Install Style	Suspended
IP Rating	IP66
Power factor	>0.95,EMI/EMC PROTECTED, THD<10%

**PRO.CODE-LX 826****FLAME ARRESTER**

Body	Stainless Steel,A216 GR.WCB/ A351 GR CF8/A351 GR CF8M/A351 GR CF3
Contact Rating	50VA
Max Switching Voltage	240 V AC / 200V DC
Element Plate	SS316
Element Mesh	SS321
Hood	CARBON STEEL/STAINLESS STEEL
Size	1"(DN25) TO 20"(DN500)

**PRO.CODE-LX 827****BREATHER VALVE**

Body	Stainless Steel,A216 GR.WCB/ A351 GR CF8/A351 GR CF8M/A351 GR CF3
Body Size & Rating	FLANGED 2",3",4" ANSI B16.5 CLASS 150
Relief Set Pressure	20MM WCG to 600 MM WCG
Set Vacuum	20 to 600 MM WCG
Temperature Capabilities	45°C to 200° C with different ELASTOMERIC Parts

**PRO.CODE-LX 828**



**INDUSTRIAL HOOTER WITH FLASHLIGHT**

Body	Die cast Aluminium,moulded plastic
Supply	15W RMS
Ingress Protection	IP66
Electrical Rating	230V VAC
Sound Output	SPLAT 1K Hz 110DB/15W/1M
Impedance	8 OHMS
Frequency Responce	300-5000 Hz
Electrical Rating	230V AC
Led	300NOS
Light Intensity	600TO630NM

**PRO.CODE-LX 829**



**FLAM EPROOF HOOTER**

Body	DIA CAST ALUMINIUM
INGRESS PROTECTION	IP66
ELECTRICAL RATING	230V VAC
INPUT POWER	10WRMS/13V IMPEDANCE 8 Ohm
Supply	230VA110V AC/12V DC/24VDC
SOUNDE OUTPUT	SPLAT 1 K Hz 90DB /6W/1M
FREQUANCY RESPONCE	300-5000 Hz
CABLE ENTRY 2NOS SIZE 3/4 ET OR 1/2" NPT	

**PRO.CODE-LX 830**



**FLAMEPROOF ON-OFF ROTARY SWITCH**

Body	DIA CAST ALUMINIUM
Mounting	Wall
The Following Rating Is Available	
16A 230V - On -off Rotary Switch	
25A 230V - On -off Rotary Switch	
25A 415V - On -off Rotary Switch	
16A 230V - On -off -on Rotary Switch	
25A 415V - Reverse Forward Switch	

### PRO.CODE-LX 831



### FLAMEP ROOF SWITCH SOCKET WITH PLUG TOP

Body DIA CAST ALUMINIUM, Glass Fill Nylon Socket and Plug Top holder & Brass Pin.

Mounting Wall

- 16A 230V AC - P+N +E - 3 Pin Socket and Plug
- 25A 230V AC - P+N+E - 3 Pin Socket and Plug
- 16A /25A 415V AC - TP+E - 4 Pin Socket and Plug
- 25A / 32A 415V AC - TP+N+E - 5 Pin Socket and Plug

### PRO.CODE-LX 832



### FLP/WP HOOTER WITH ACCEPT BUTTON

Enclosure Die cast Aluminum

Electrical Rating 230VAC Electrical Rating: 230VAC/ 110VAC/ 12V DC/24V DC

Entry 2 nos size 3/4" ET OR M20 X 1.5P OR 1/2" NPT

Mounting Wall

Sound level 100 DB

Product Features : Fault arrives – Buzzer and Red Colour indicator activates and glowing red. Accept button – Buzzer muted- Red colour indicator remain ON till system re reactivated.

### PRO.CODE-LX 833



### PRESSURE SWITCH

Body SS316

- Sensing Elements: Diaphragm/Piston SS316L
- Enclosure: Weather proof
- Protection: IP65
- Enclosure: Die cast aluminum
- Electrical rating: 5A/15A250 VAC ,
- Scale accuracy: +-3% of FS
- Differential: Fixed/Adjustable type
- Process Connection: 1/4" BSP(F)
- Cable entry: 3/4" ET
- Mounting: Wall/Pipe

## LINEX QUALITY POLICY

In support of our vision, the policy is to maintain a practical but comprehensive Quality Management System based on AS/NZS ISO 9001:2015.

This will be central to the delivery of our commitment to customer satisfaction and continuous improvement. Relevant, attainable and current Objectives for the QMS will be communicated to staff and progress against them measured and reported.

### The policy embraces the following key principles:

- The satisfaction of customers, both external and internal, shall be the primary focus of the quality management system
- Systems and controls shall be designed to ensure complete understanding of customer requirements and consistently accurate and effective product provision
- Suppliers are integral to the quality process and company staff shall work closely with them to meet customer's needs
- Staff shall be encouraged and empowered to participate in quality improvement activities through teamwork and consultation
  - All staff shall have individual responsibility for understanding and applying this Quality Policy in the performance of their tasks
  - Company management is fully committed to the Quality Policy through provision of resources, active participation in quality improvement activities and leadership by example



## - CERTIFICATION -



### - Registered Office -

110, Sheeba Complex, Near Regal Cinema,  
M. G. Road, INDORE - 452 001 (M.P.) INDIA

Ph. : 0731-4900039-4087711

Mob. : 90988 70581

info@linexflw.com, marketing@linexflw.com

### - Mumbai Office -

B-23, New Vikas, Opp. Gyankendra School,  
Near Kokilaben Ambani Hospital,  
Four Banglows, Andheri (W), Mumbai-400058

Mob. : 88284 35241

mumbai@linexflw.com

### - Work Shop -

30-D, Sector - C, Sanwer Road, Industrial Area, INDORE - 452 015 (M.P.) INDIA

### - Mfg Unit -

**Unit - 1** : Plot No.198, Phase-2, GIDC, Vapi - 396 195, Valsad (Gujarat), INDIA

**Unit - 2** : National Highway-27, S.R. No. 85, Near Atul Auto, Gondal Road, Shapar, Dist. Rajkot (Gujrat)

E-mail : gujrat@linexflw.com

### - Dealer Network -

◆ Pune ◆ Rajasthan ◆ Hyderabad ◆ Ahemdabad ◆ Agra ◆ Chhattisgad

### - International Network -

◆ Gulf Countries ◆ Australia ◆ Singapore

visit with us : [www.linexflw.com](http://www.linexflw.com)